

Option configurations

Options without illustration:

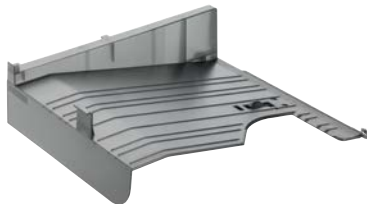
- DT-5100 document tray
- HD-6 (32 GB) SSD
- HD-7 (128 GB) SSD
- Fax system (11)
- USB card reader
- Card authentication kit (B)
- Card reader holder (11)
- UG-33 ThinPrint® kit
- Data security kit (E)
- IB-50 Gigabit Ethernet card
- IB-51 WLAN card
- AK-5100 attachment kit (for MT-5100)
- Cabinet no. 74 (high), no. 75 (low)

MT-5100 multi tray*
(500 sheet + 5 x 100 sheet)



Alternatively:
DF-5100 internal finisher
(300 sheet), stapling (50 sheet)

Alternatively:
JS-5100 job separator
(100 sheet)



Alternatively:
PF-5130 universal cassettes
(2 x 500 sheet)



PF-5120 universal cassette
(500 sheet), required for installation
of PF-5130 and PF-5140

PF-5140 large capacity tray
(2,000 sheet)

*cannot be combined with DF-5100, JS-5100